

**16" (40cm) Stand Fan  
Instruction Manual**

For Model 15816 PG



**THIS PRODUCT IS EQUIPPED WITH A POLARIZED PLUG**

(a plug having one blade wider than the other). To reduce the risk of electric shock, this plug is intended to fit in a polarized outlet only one way. If the plug does not fit fully in the outlet, reverse the plug. If it still does not fit, contact a qualified electrician. **DO NOT DEFEAT THE SAFETY PURPOSE OF THIS POLARISE PLUG**

**WARNING** To reduce the risk for fire, electric shock or personal injury

- Do not use this fan with any solid-state speed control device.
- Unplug the fan before cleaning or servicing.
- If you disassemble your fan, completely re-assemble before plugging into outlet.
- To reduce the risk of electric shock and injury to persons, do not use in window.

**PLEASE READ AND SAVE THESE IMPORTANT INSTRUCTIONS**

This fan is for residential use only. It is not intended for use in commercial or industrial settings.

**Important instructions**

Read and save these important safety instructions before using this fan, when using electrical appliances, basic safety precautions should always be followed including the following:

**WARNING** - To reduce the risk of fire or electrical shock, do not use this product with any solid state speed control device. To reduce the risk of fire or electric shock and injury to persons, do not use in a window.

This product employs overload protection (fuse). A blown fuse indicates an overload or short-circuit situation. If the fuse blows, unplug the product from the outlet.

Replace the fuse as per the user service instructions (follow marking for power fuse rating) and check the product. If the replacement fuse blows, a short-circuit may be present and the product should be discarded or returned to an authorized service facility for examination and/or repair.

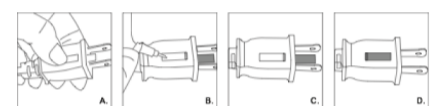
- Use this fan only as described in this manual. Other uses not recommended may cause fire or electric shock.
- This product is intended for HOUSEHOLD USE ONLY and not for commercial, industrial or outside use. To protect against electrical shock, do not place fan in window, immerse unit, plug or cord in water, or spray with liquids.
- Unplug the fan from the outlet when not in use, when moving fan from one location to another and before cleaning.
- Do not operate the fan in the presence of explosive and/or flammable fumes.
- Do not place the fan or any parts near an open flame, cooking or other heating appliance.
- Avoid contact with moving fan parts.
- To disconnect, grip the plug and pull it from the wall outlet. Never yank the cord.

- The use of attachments is not recommended and may cause hazards.
- Always use on a dry, level surface.
- Do not operate if the fan housing is removed or damaged.
- Do not operate any fan with a damaged cord or plug.
- Discard fan or return to an authorized service facility for examination and/or repair.
- Do not run cord under carpeting. Do not cover cord with throw rugs, runners, or similar coverings. Do not route cord under furniture or appliances.
- Arrange cord away from traffic area and where it will not be tripped over.
- The appliance is not to be used by children or persons with reduced physical, sensory or mental capabilities, or lack of experience and knowledge, unless they have been given supervision or instruction.
- Close supervision is necessary when any appliance is used by or near children. Children being supervised not to play with the appliance.

**User servicing instructions**

Grasp plug and remove from the receptacle or other outlet device. Do not unplug by pulling on cord.  
**A.** Open fuse cover by sliding access cover on top of attachment plug towards plug blades.  
**B.** Remove fuse carefully by gently pulling out the ends of the fuse from the receptacle. Risk of fire. Replace fuse only with 5 amp, 125 Volt fuse.  
**C.** Install replacement fuse by first placing the end of the fuse into the fuse receptacle which is opposite of the blades of the plug, then carefully push in the other end. Only push against the metal end of the fuse, not the glass center portion.

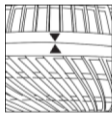
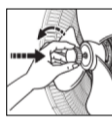
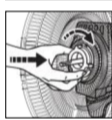
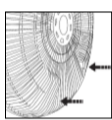
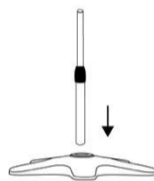
D. Close fuse cover by sliding the cover back into the plug until it is completely closed and latches.



Risk of fire. Do not replace attachment plug. Contains a safety device (fuse) that should no be removed. Discard product if the attachment plug is damaged.

**Assembly**

1. Place the **base** on a flat surface. Insert the pole onto the base to secure.
2. Place the **motor assembly and control panel** onto the **extension pole** and secure by turning the **assembly knob** clockwise.
3. Remove the **rear grill mounting nut** by turning it counter-clockwise.
4. Place the **rear grill** onto the **motor housing** aligning the 3 raised knobs on the top of the **motor housing** with the 3 holes on the grill and make sure the indents of the **rear grill** is on the bottom.
5. Place the **rear grill mounting nut** and tighten turning clockwise.
6. Align the **blade** onto the **shaft** and secure it by tightening the **blade knob** counter-clockwise.
7. Properly align the arrows on the top of the **front grill** with the **rear grill**. Push the front grill clips into the rear grill until you hear a snap for each clip.



2. Making sure the speed control is at OFF position.
3. Plug the power cord into the socket.
4. The speed of the fan can be selected by rotary knobs on the motor housing. Off (0), Low (1), Med (2), High (3)
5. Oscillation can be activated by pushing the bar downward and the fan can be made to operate in a stationary position by gently pulling the knob.

**Cleaning**

1. Be sure your fan is in the OFF position.
2. Unplug the fan before cleaning.
3. Use only a soft, damp cloth to gently wipe the fan.
4. **Do not** immerse the fan in water and never allow water to enter the Motor Housing.
5. **Do not** use gasoline, paint thinner or other chemicals to clean the fan.

**Storage instructions**

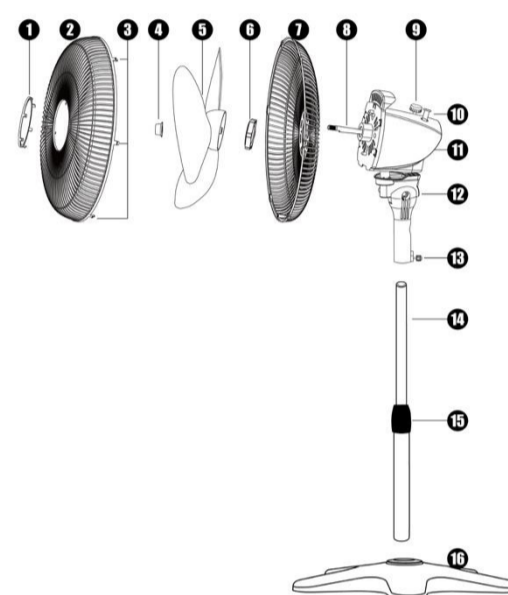
The product must be packaged in its original box for storage. Place the fan in a storage room with low humidity.

**Trouble shooting tips**

If your Fan fails to operate, see below for a probable cause and solution.  
 • Be sure the power cord is plugged into a working electrical outlet.  
 If you have a problem that can not be resolved by the step listed above, please return the fan to the place of the original purchase or see your warranty. Do not attempt to open the motor housing yourself; doing so may void your warranty and cause damage to the fan or personal injury.

**Description of parts**

1. Brand Plate
2. Front grill
3. Grill clips
4. Blade knob
5. Blade
6. Rear grill mounting nut
7. Rear grill
8. Shaft
9. Rotary Speed Knob
10. Oscillating pin
11. Motor assembly
12. Neck
13. Assembly knob
14. Pole
15. Height adjuster
16. Base



**LIMITED WARRANTY**

Except to the extent otherwise provided herein, **Air Monster** warrants that the Fan ("Product") is free of defects in workmanship and materials. This Warranty extends only to the original consumer purchaser of the product ("Buyer"), is enforceable for a period of one (1) year from the date of original purchase (the "Warranty Period"), and covers only damage resulting from defects in material or workmanship. This Limited Warranty does not cover conditions or malfunctions resulting from normal wear and tear or otherwise due to the normal aging of the Product, neglect, abuse, accident, modifications, alterations, or to repairs attempted or made by any entity or individual other than **Air Monster**. This Warranty does not cover any damage to the Product caused by the environment or other natural events. Claims for breach of this Warranty must be made within the Warranty Period and within 30 days after Buyer discovers the non-conforming Product.

Buyer's remedies with respect to this Warranty are limited to the repair or replacement of defective Product after inspection and verification of a covered defect by **Air Monster**. Any Product to be considered for repair or replacement must be returned by Buyer to a duly authorized **Air Monster** retail store or service center.

Buyer assumes all risks and liability whatsoever resulting from the use of the Product. In no event shall **Air Monster**, its members or affiliates, be liable for any direct, indirect, special, incidental or consequential damages, lost revenues or profits, loss of business, or loss of goodwill, resulting from a defect in, or use of, the Product even if **Air Monster** has been advised of the possibility thereof.

TO THE EXTENT PERMITTED BY LAW, THIS WARRANTY AND THE REMEDIES SET FORTH HEREIN ARE EXCLUSIVE AND IN LIEU OF ALL OTHER WARRANTIES, REMEDIES AND CONDITIONS, WHETHER ORAL, WRITTEN, STATUTORY, EXPRESS OR IMPLIED. AS PERMITTED BY APPLICABLE LAW, **Air Monster** SPECIFICALLY DISCLAIMS ANY AND ALL STATUTORY OR IMPLIED WARRANTIES, INCLUDING WITHOUT LIMITATION, WARRANTIES OF MERCHANTABILITY AND FITNESS FOR A PARTICULAR PURPOSE, AND WARRANTIES AGAINST HIDDEN OR LATENT DEFECTS.

The provisions of this Warranty and limitation of liability may not be modified in any respect except in writing signed by a duly authorized officer **Air Monster**.

**GARANTIA LIMITADA**

A excepcion de la extension que de otra manera es prevista en este documento, **Air Monster** garantiza que el Ventilador ("Producto") esta libre de defectos en ejecucion del trabajo y materiales. Esta garantia se extiende solamente al consumidor original que compro el producto (Comprador), esta es ejecutable por el periodo de 1 ano de la fecha original de compra (El Periodo de Garantia), y solamente cubre danos que resulten de defectos de la ejecucion del trabajo y materiales. Esta garantia limitada no cubre condiciones o mal funcionamiento que sean resultado del desgaste normal o rotura o que de otra manera sean resultado del envejecimiento del producto, descuido, abuso, accidentes, modificaciones, alteraciones o composturas tratadas de hacer o hechar por una entidad o individuo otro que **Air Monster**. Esta garantia no cubre ningun dano al producto causado por el medio ambiente u otro evento natural. Reclamos por incumplimiento de esta Garantia deben de hacerse dentro del periodo de garantia y dentro de los 30 dias despues que el comprador descubre el producto no conforme.

Los remedios del comprador con respecto a esta garantia son limitados a la reparacion o el repuesto del producto defectuoso despues que **Air Monster**. lo inspeccione y verifique que se trata de un defecto que tenga cubrimiento. Cualquier producto que sea considerado para reparacion o repuesto debe de ser regresado por el comprador a una tienda **Air Monster** o centro servicio debidamente autorizados.

El comprador assume todos los riesgos y responsabilidades cualesquiera que resulten del uso del producto. En ningun caso **Air Monster**, sus miembros o afiliados, seran responsables por cualquier directo, indirecto, especial, incidental o consequential dano, ingreso o beneficio perdido, perdida de negocio o perdida de buena voluntad, que resulte de un defecto del producto o su uso incluso si **Air Monster** habia sido avisado de la posibilidad de los mismo.

PARA LA EXTENSION PERMITDA POR LA LEY, ESTA GARANTIA Y LOS REMEDIOS ESTABLECIDOS EN EL PRESENTE DOCUMENTO SON EXCLUSIVOS Y EN LUGAR DE TODAS LAS OTRAS GARANTIAS, REMEDIOS Y CONDICIONES, YA SEAN VERBALES, ESCRITAS, ESTATUTARIOS, EXPRESAS O IMPLICADAS. COMO SE PERMITE POR UNA LEY APLICABLE, **Air Monster** ESPECIFICAMENTE RENUNCIA A CUALQUIERA Y TODAS LAS GARANTIAS ESTATUTORIAS O IMPLICADAS, INCLUYENDO SIN LIMITACION, GARANTIAS DE COMERCIALIZACION E IDONEIDAD PARA UN PROPOSITO PARTICULAR, Y GARANTIAS EN CONTRA DE DEFECTOS OCULTOS O LATENTES.

Las disposiciones de esta Garantia y la limitacion de responsabilidad no sera modificada en ningun respecto con la unica excepcion de en escrito y firmada por un oficial debidamente autorizado de **Air Monster**.